

Name: \_\_\_\_\_

Date: \_\_\_\_\_ Period: \_\_\_\_\_

## Anatomy of a Fish (Coloring)

Use your book to reference the anatomy of the fish. Find each of the organs below and color-code them to the fish according to the key below. If you cannot see a particular part on one fish, be sure to color it on the second fish.

Caudal Fin (blue)

Anal Fin (pink)

Dorsal Fin (yellow)

Pelvic Fin (green)

Pectoral Fin (orange)

Operculum (brown)

Lateral Line System (black)

Gills (red)

Heart (pink)

Stomach (green)

Esophagus (yellow)

Liver (brown)

Intestine (blue)

Reproductive Organs (orange)

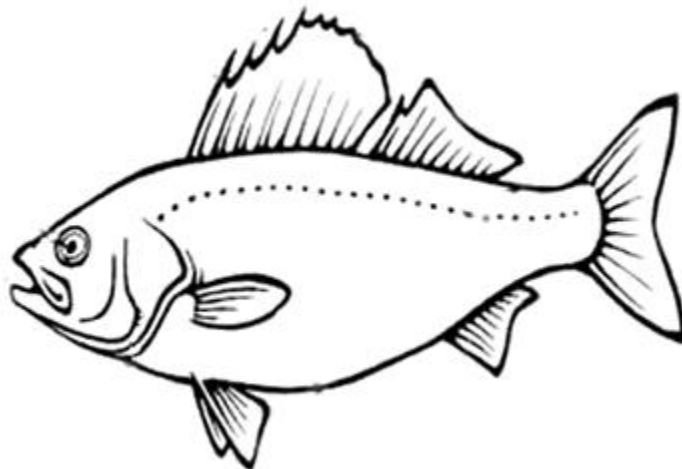
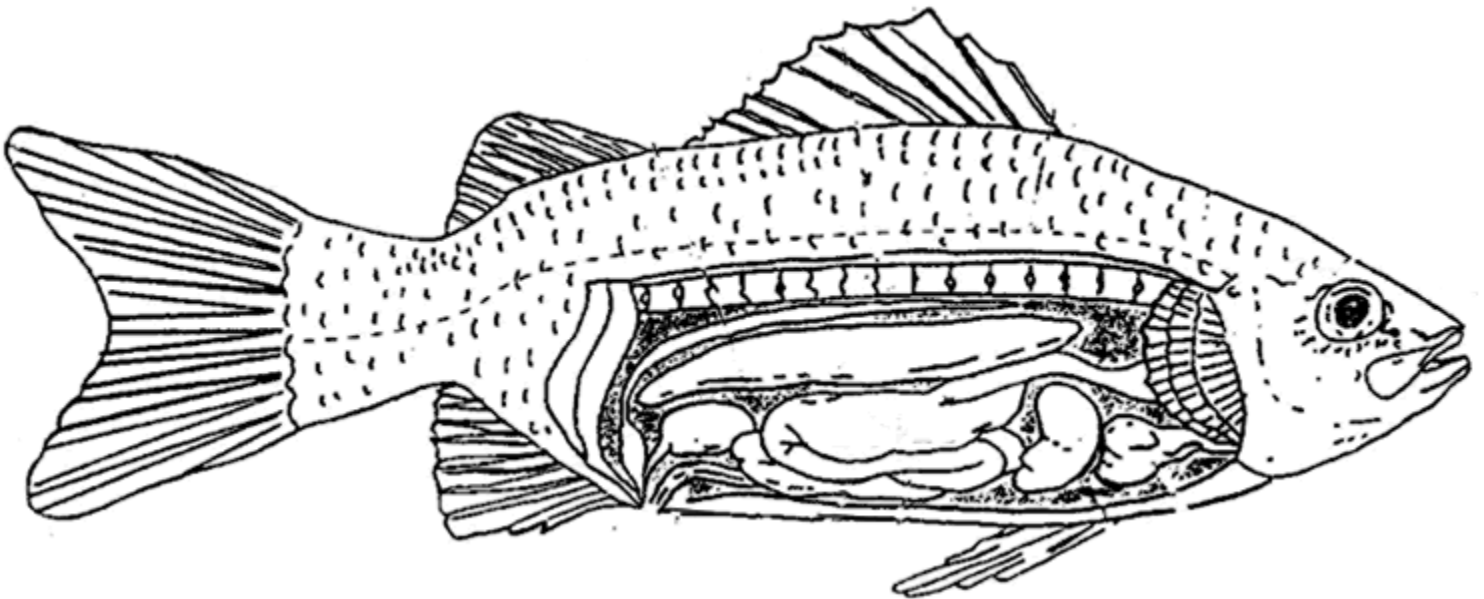
Muscles (red)

Vertebrae (yellow)

Swim Bladder (blue)

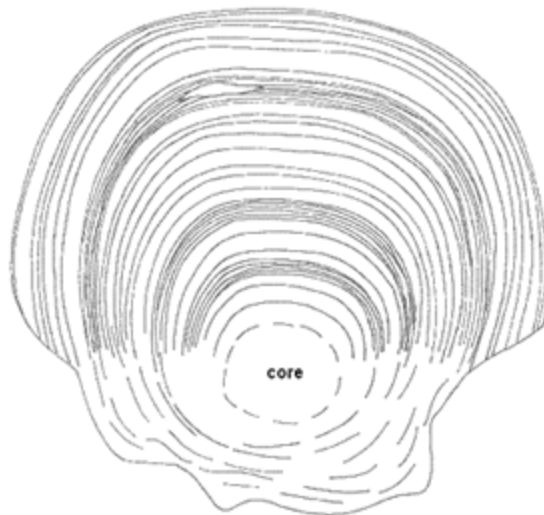
Kidney (green)

Scales (purple)



Name: \_\_\_\_\_

Date: \_\_\_\_\_ Period: \_\_\_\_\_



### **Fish Scales Tell the Age of a Fish**

Look at the image of the fish scale, like a tree, scales show rings that indicate periods of growth. Rings that are farther apart occur when the fish grows well and there is lots of food - in the summer season. Rings that are close together occur when the fish does not get much food and grows slowly. On the scale you can identify the summer growth and the winter growth. (There will be several rings in each).

The core represents the fish when it was first born, as a fry. The rings near the edge are the most recent periods of growth.

**Color the summer growth periods green.** |

**Color the winter growth periods blue.**

How old is this fish (in years)? \_\_\_\_\_