

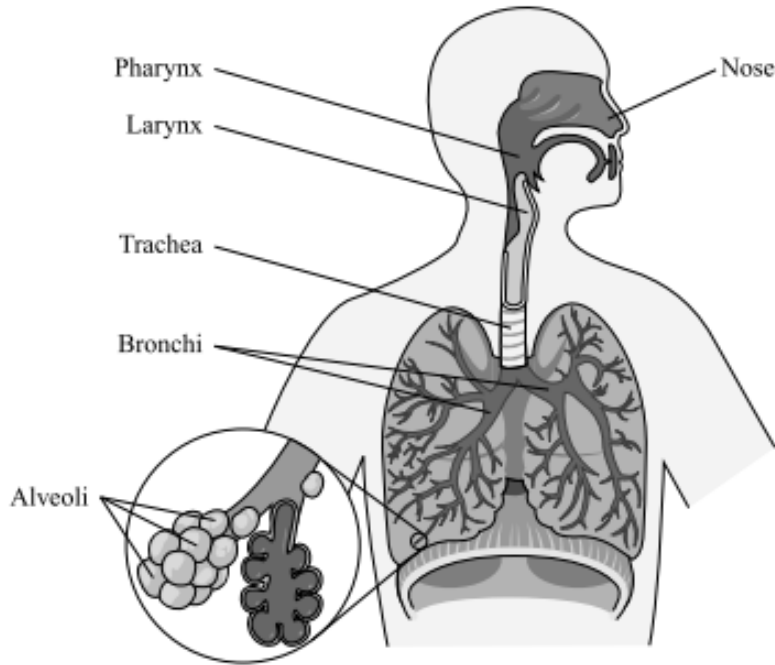
Name: \_\_\_\_\_

Period: \_\_\_\_ Date: \_\_\_\_\_

### Practice with MCAS Open-Response

*Use the example of an MCAS open-response and the rubric; write as complete an answer as you can to the question below.*

The diagram below shows parts of the human respiratory system.



- Identify the part of the respiratory system that functions to exchange gases between the respiratory system and the circulatory system.
- Describe in detail how gases are exchanged between the respiratory system and the circulatory system in the part of the respiratory system you identified in part (a).
- Select **two** other parts of the respiratory system labeled in the diagram. Describe the function of **each** of the parts you selected.

---

---

---

---

---

---

---

---

---

---

